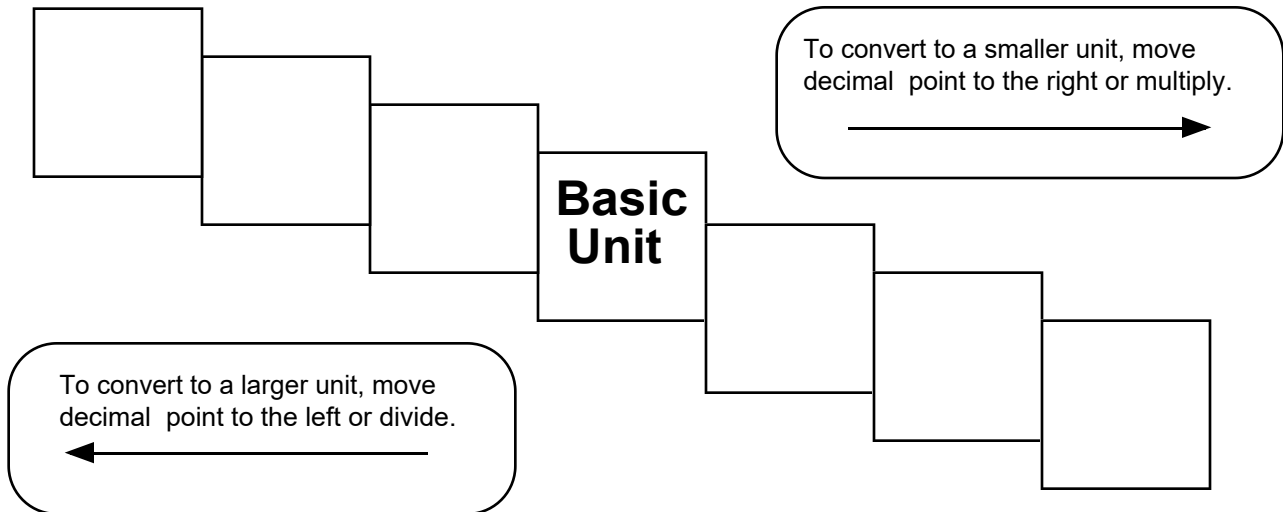


Metric Mania

Conversion Practice

Name _____



Try these conversions, using the ladder method.

$1000 \text{ mg} = \underline{\hspace{2cm}} \text{ g}$

$1 \text{ L} = \underline{\hspace{2cm}} \text{ mL}$

$160 \text{ cm} = \underline{\hspace{2cm}} \text{ mm}$

$14 \text{ km} = \underline{\hspace{2cm}} \text{ m}$

$109 \text{ g} = \underline{\hspace{2cm}} \text{ kg}$

$250 \text{ m} = \underline{\hspace{2cm}} \text{ km}$

Compare using $<$, $>$, or $=$.

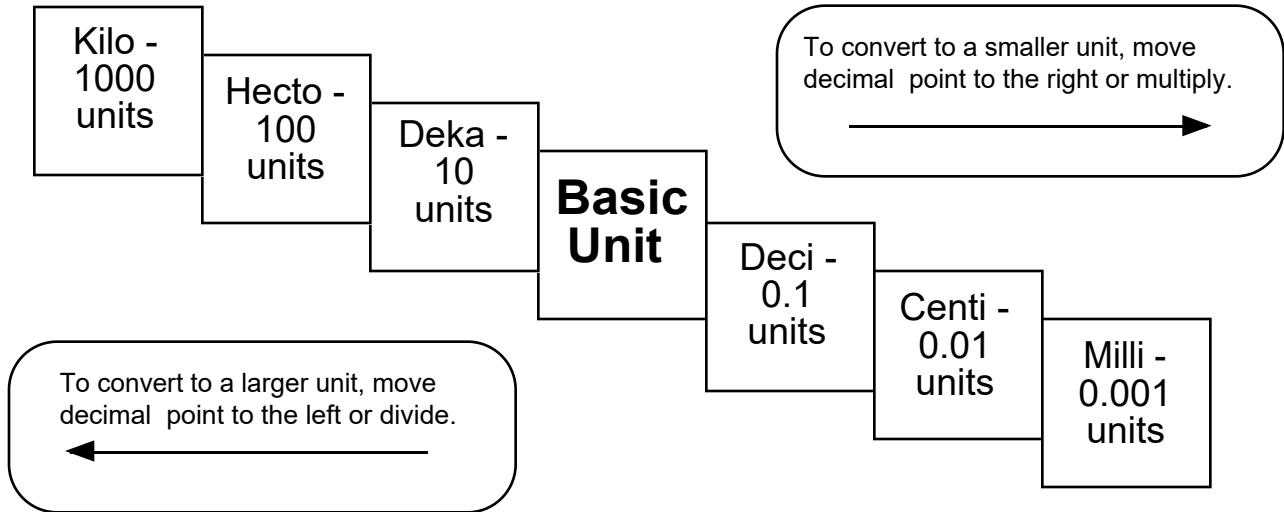
$56 \text{ cm} \bigcirc 6 \text{ m}$

$7 \text{ g} \bigcirc 698 \text{ mg}$

Metric Mania

Conversion Practice

Overhead Copy



Try these conversions, using the ladder method.

$1000 \text{ mg} = \underline{\hspace{2cm}} \text{ g}$

$1 \text{ L} = \underline{\hspace{2cm}} \text{ mL}$

$160 \text{ cm} = \underline{\hspace{2cm}} \text{ mm}$

$14 \text{ km} = \underline{\hspace{2cm}} \text{ m}$

$109 \text{ g} = \underline{\hspace{2cm}} \text{ kg}$

$250 \text{ m} = \underline{\hspace{2cm}} \text{ km}$

Compare using $<$, $>$, or $=$.

$56 \text{ cm} \bigcirc 6 \text{ m}$

$7 \text{ g} \bigcirc 698 \text{ mg}$

Conversion Challenge

Write the correct abbreviation for each metric unit.

1) Kilogram _____

4) Milliliter _____

7) Kilometer _____

2) Meter _____

5) Millimeter _____

8) Centimeter _____

3) Gram _____

6) Liter _____

9) Milligram _____

Try these conversions, using the ladder method.

1) 2000 mg = _____ g

6) 5 L = _____ mL

11) 16 cm = _____ mm

2) 104 km = _____ m

7) 198 g = _____ kg

12) 2500 m = _____ km

3) 480 cm = _____ m

8) 75 mL = _____ L

13) 65 g = _____ mg

4) 5.6 kg = _____ g

9) 50 cm = _____ m

14) 6.3 cm = _____ mm

5) 8 mm = _____ cm

10) 5.6 m = _____ cm

15) 120 mg = _____ g

Compare using <, >, or =.

16) 63 cm ○ 6 m

17) 5 g ○ 508 mg

18) 1,500 mL ○ 1.5 L

19) 536 cm ○ 53.6 dm

20) 43 mg ○ 5 g

21) 3.6 m ○ 36 cm